


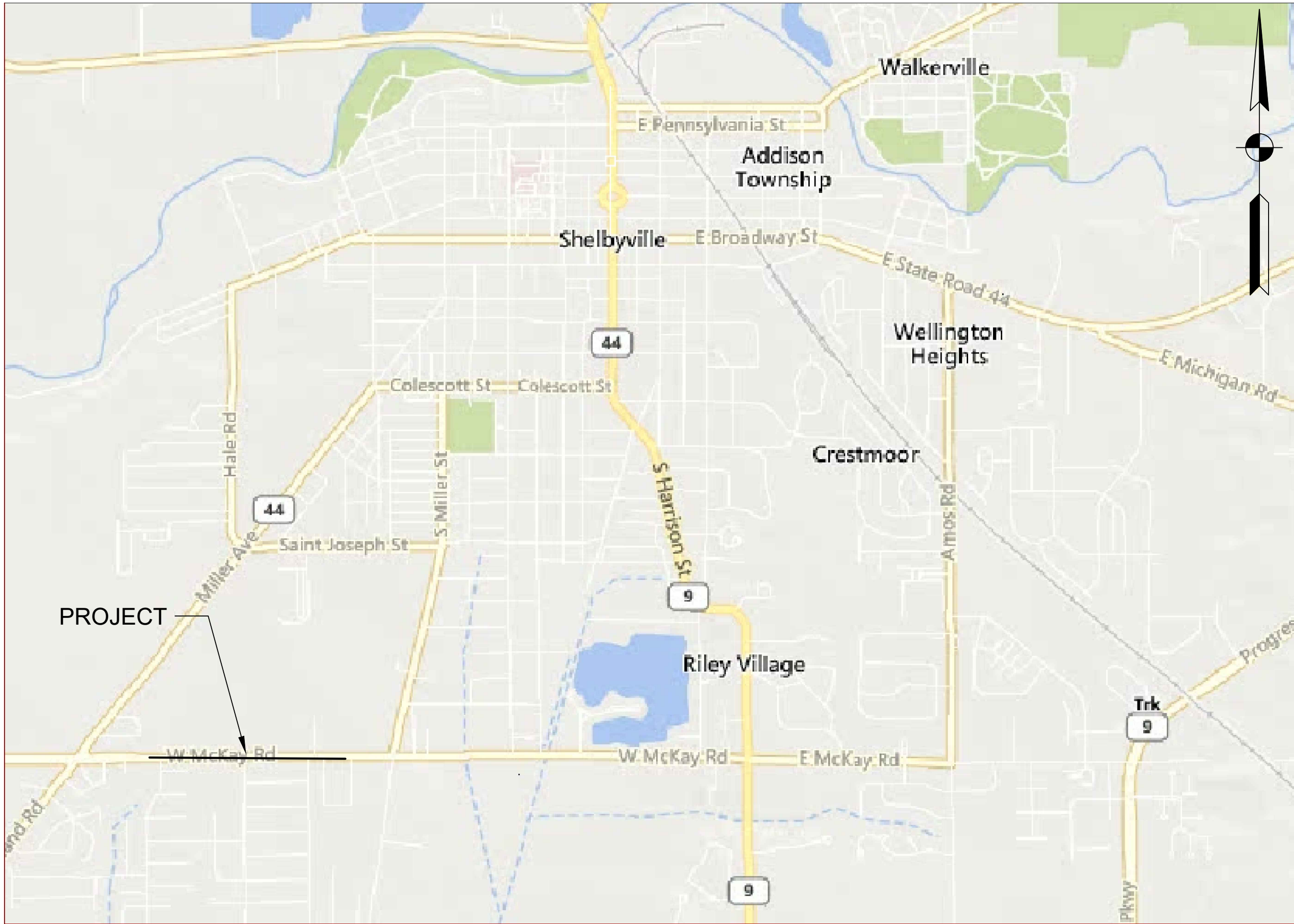
# MCKAY ROAD RECONSTRUCT CITY OF SHELBYVILLE

HOLEY MOLEY SAYS  
**"DON'T  
DIG  
BLIND"**

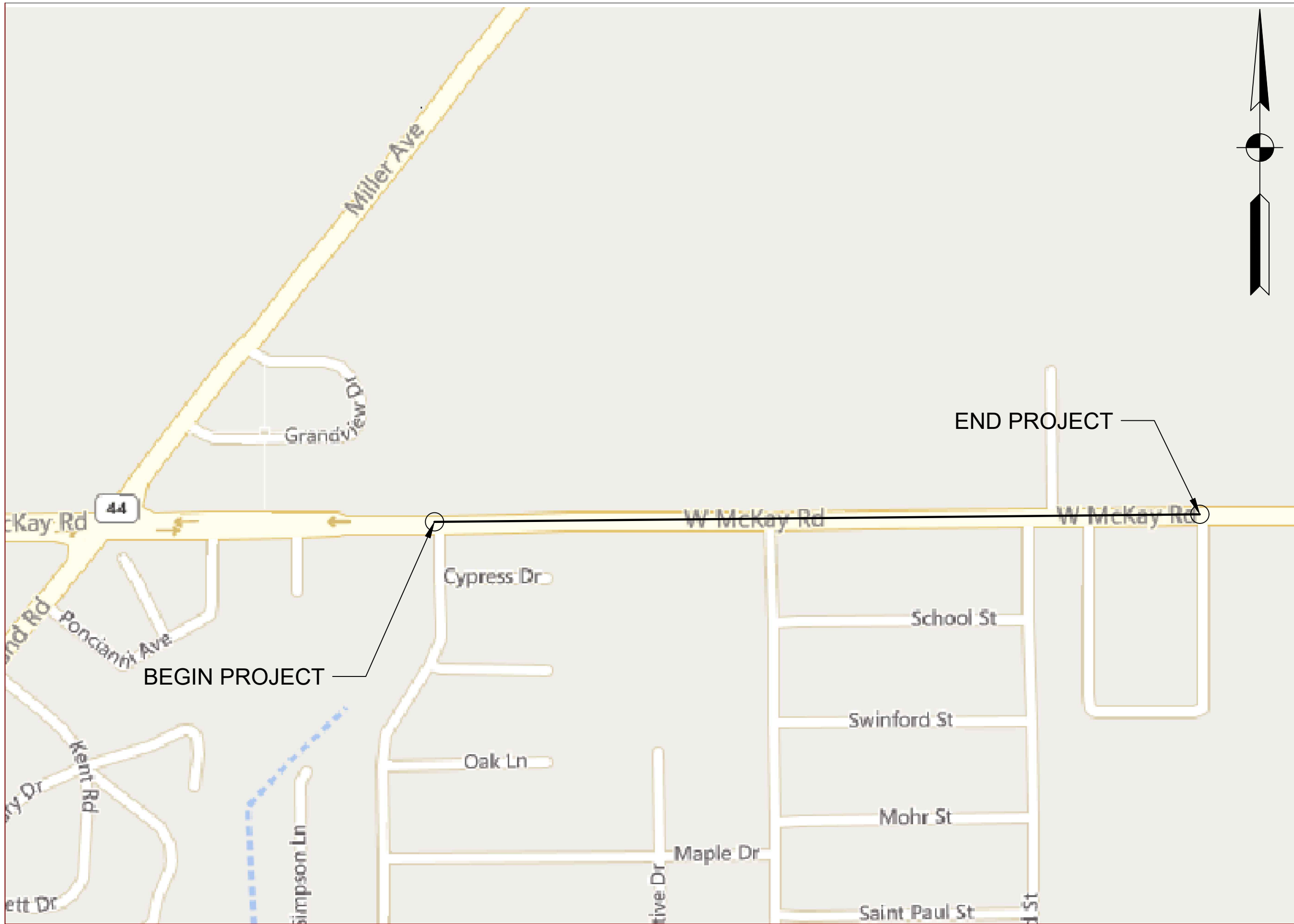


**"IT'S THE LAW"**  
CALL 2 WORKING DAYS BEFORE YOU DIG  
**1-800-382-5544**

CALL TOLL FREE  
PER INDIANA STATE LAW (C-8-1-26-1  
ET SEQ. AS AMENDED AND SUPPLEMENTED,  
IT IS AGAINST THE LAW TO EXCAVATE  
WITHOUT NOTIFYING THE UNDERGROUND  
LOCATION SERVICE TWO (2) WORKING  
DAYS BEFORE COMMENCING WORK.



**VICINITY MAP**



**LOCATION MAP**



CITY OF SHELBYVILLE, INDIANA  
ENGINEERING DEPARTMENT  
44 WEST WASHINGTON STREET  
SHELBYVILLE, INDIANA 46176  
PHONE (317) 398-5102  
FAX (317) 392-5110  
www.cityofshelbyvillein.com

**CITY OF  
SHELBYVILLE, INDIANA**

**TITLE SHEET**

HORIZONTAL SCALE

—

VERTICAL SCALE

SHEET

1 of 8

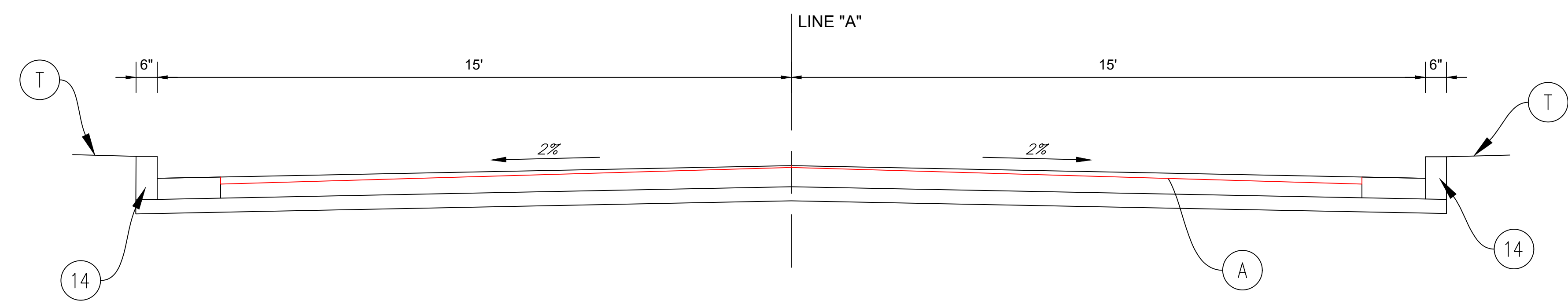
PROJECT

HOLEY MOLEY SAYS  
"DON'T  
DIG  
BLIND"



"IT'S THE LAW"  
CALL 2 WORKING DAYS BEFORE YOU DIG  
1-800-382-5544

CALL TOLL FREE  
PER INDIANA STATE LAW IC-8-1-26-1  
ET SEQ. AS AMENDED AND SUPPLEMENTED,  
IT IS AGAINST THE LAW TO EXCAVATE  
WITHOUT NOTIFYING THE UNDERGROUND  
LOCATION SERVICE TWO (2) WORKING  
DAYS BEFORE COMMENCING WORK.



**ALTERNATE - MILL & OVERLAY TYPICAL  
CROSS SECTION**  
STA 0+00 to STA 25+05 LINE "A"

LEGEND: (A) TRANSVERSE CONCRETE MILL (2" TO 1/2")  
COMPOSITE INTERLAYER PAVING GRID  
2" HMA TYPE C (220#/SY)

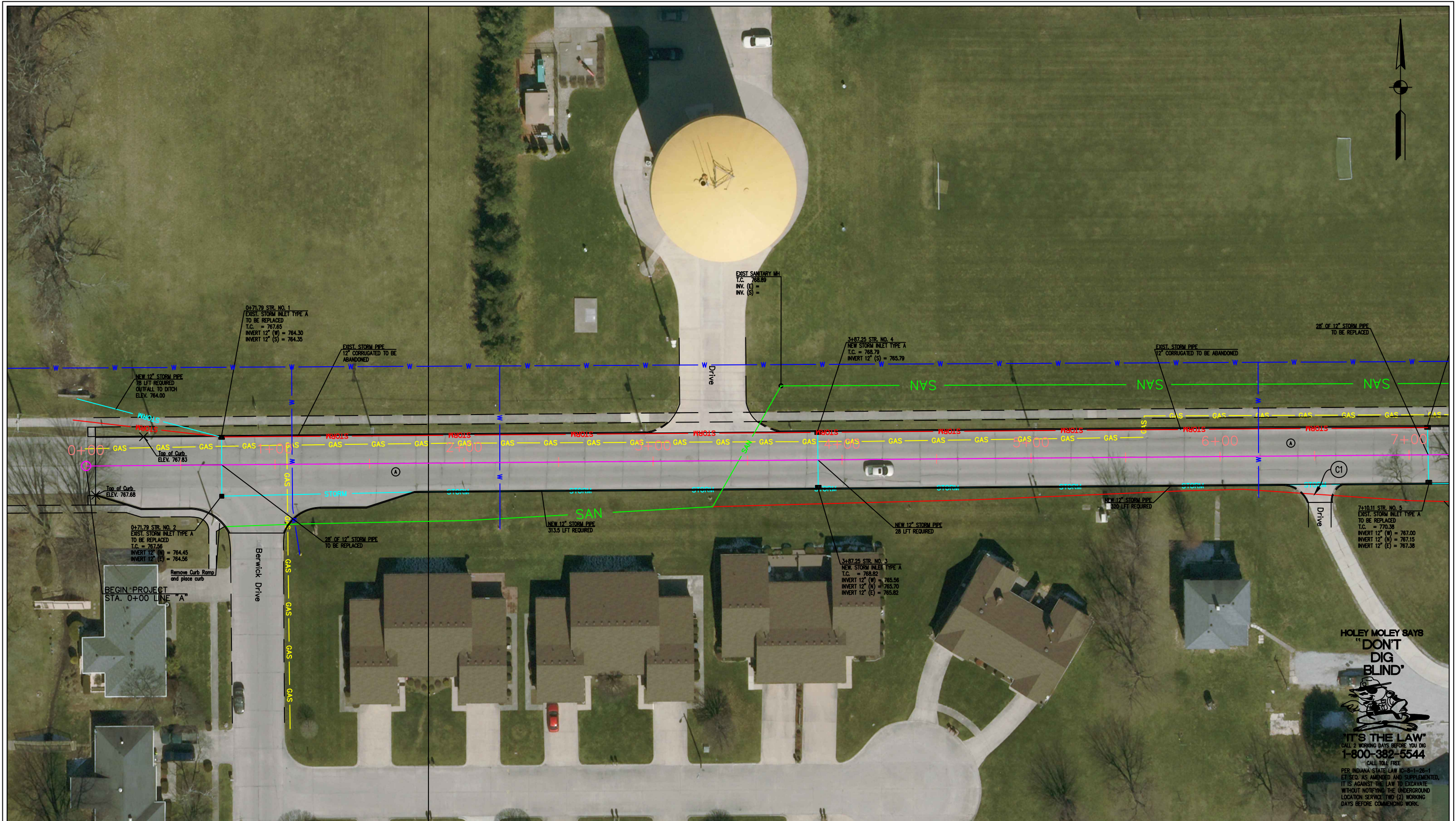
(T) Topsoil and Seeding  
(14) CURB AND GUTTER



CITY OF SHELBYVILLE, INDIANA  
ENGINEERING DEPARTMENT  
44 WEST WASHINGTON STREET  
SHELBYVILLE, INDIANA 46176  
PHONE (317) 398-5102  
FAX (317) 392-5110  
www.cityofshelbyvillein.com

**CITY OF  
SHELBYVILLE, INDIANA**  
**TYPICAL CROSS SECTIONS  
MCKAY ROAD**

HORIZONTAL SCALE	
-	
VERTICAL SCALE	
-	
SHEET	
2	of 8
PROJECT	



HOLEY MOLEY SAYS  
"DON'T  
DIG  
BLIND"



IT'S THE LAW  
CALL 2 WORKING DAYS BEFORE YOU DIG  
1-800-382-5544  
CALL TOLL FREE

PER INDIANA STATE LAW IC-8-1-25-1  
ET SEQ. AS AMENDED AND SUPPLEMENTED,  
IT IS AGAINST THE LAW TO EXCAVATE  
WITHOUT NOTIFYING THE UNDERGROUND  
LOCATION SERVICE TWO (2) WORKING  
DAYS BEFORE COMMENCING WORK.

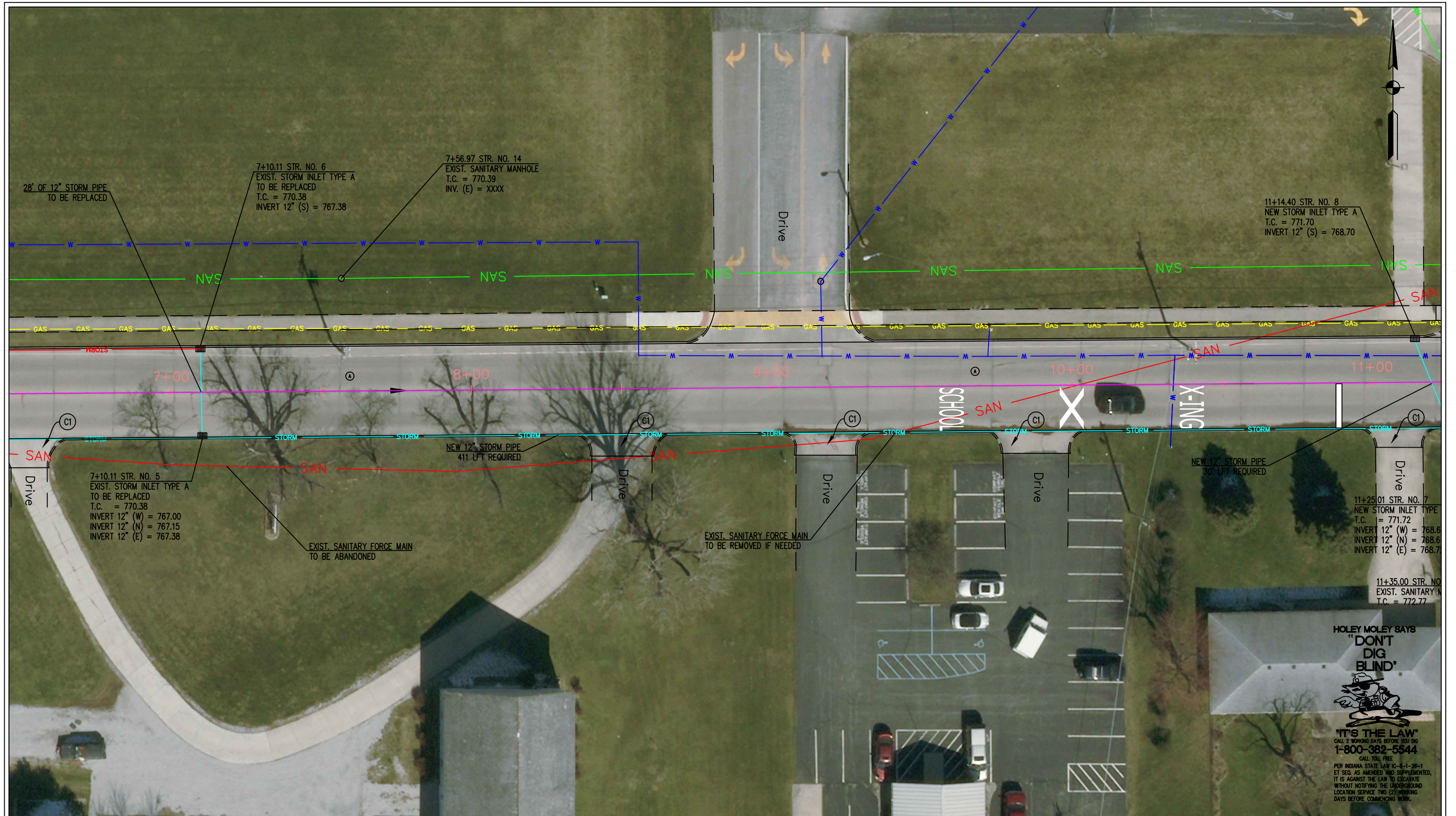
- (C1) PCCP FOR APPROACHES, 6" ON 4" #53 COMPACTED AGGREGATE
- (C2) PCCP FOR COMMERCIAL DRIVE, 8" ON 4" #53 COMPACTED AGGREGATE
- (CR) CURB RAMP
- (52) TRANSVERSE MARKING, THERMOPLASTIC CROSSWALK 24" BAR
- (A) TRANSITIONAL CONCRETE MILL (2" TO 1/2") COMPOSITE INTERLAYER PAVING GRID 2" HMA SURFACE TYPE C



CITY OF SHELBYVILLE, INDIANA  
ENGINEERING DEPARTMENT  
44 WEST WASHINGTON STREET  
SHELBYVILLE, INDIANA 46176  
PHONE (317) 398-5102  
FAX (317) 392-5110  
www.cityofshelbyville.in.gov

CITY OF SHELBYVILLE, INDIANA  
**MCKAY ROAD  
MILL AND OVERLAY**

HORIZONTAL SCALE	
-	
VERTICAL SCALE	
-	
SHEET	
3	of 8
PROJECT	
-	



- (C1) PCCP FOR APPROACHES, 6" ON 4" #53 COMPACTED AGGREGATE
- (C2) PCCP FOR COMMERCIAL DRIVE, 8" ON 4" #53 COMPACTED AGGREGATE
- (CR) CURB RAMP
- (52) TRANSVERSE MARKING, THERMOPLASTIC CROSSWALK 24" BAR
- (A) TRANSITIONAL CONCRETE MILL (2" TO 1/2") COMPOSITE INTERLAYER PAVING GRID 2" HMA SURFACE TYPE C



CITY OF SHELBYVILLE, INDIANA  
 ENGINEERING DEPARTMENT  
 44 WEST WASHINGTON STREET  
 SHELBYVILLE, INDIANA 46176  
 PHONE (317) 398-5102  
 FAX (317) 392-5110  
 www.cityofshelbyville.in

**CITY OF SHELBYVILLE, INDIANA**

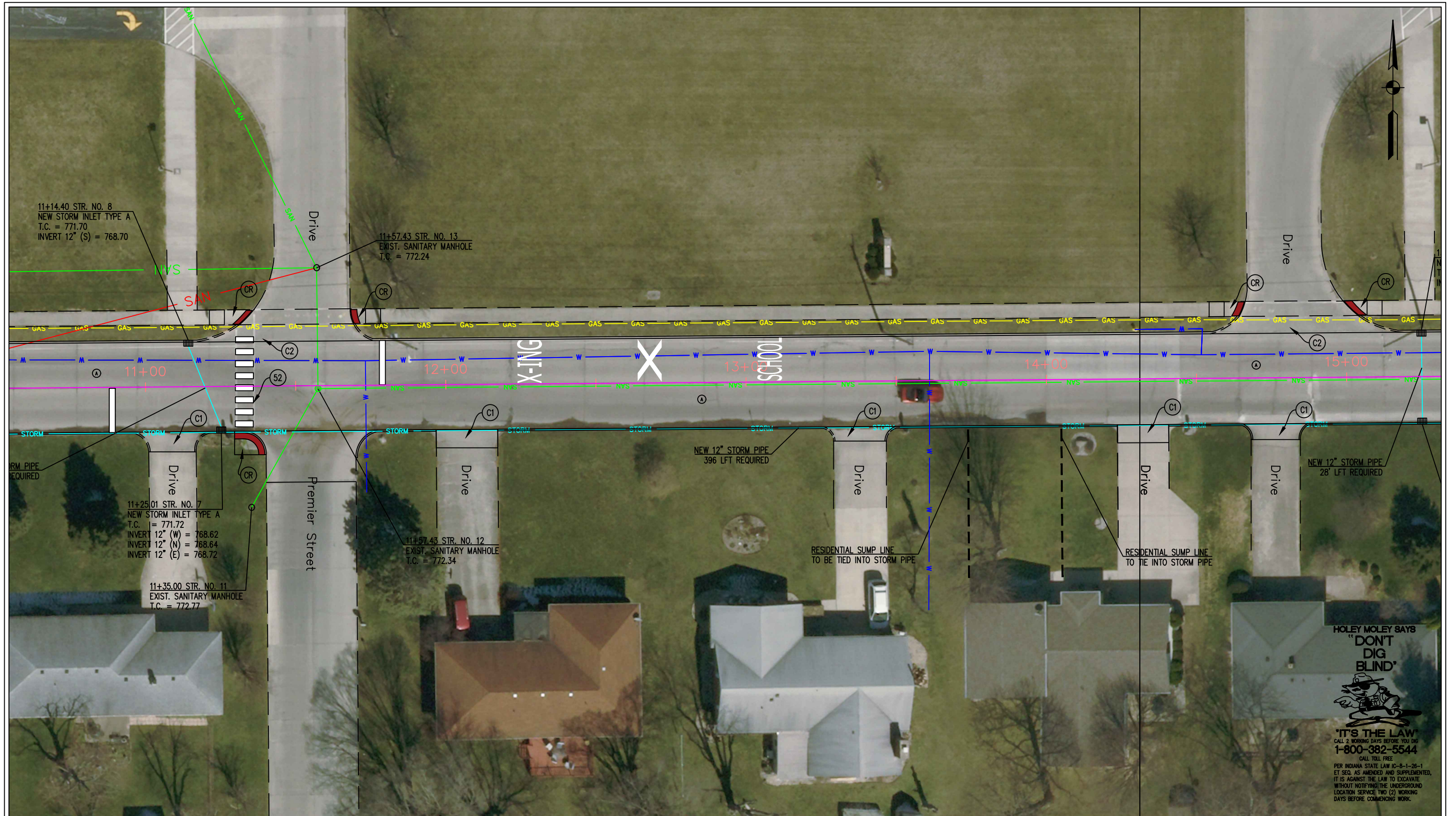
**MCKAY ROAD  
MILL AND OVERLAY**

HORIZONTAL SCALE	-
VERTICAL SCALE	-
SHEET	4 of 8
PROJECT	-

**HOLEY MOLEY SAYS  
"DON'T  
DIG  
BLIND"**

**"IT'S THE LAW"**  
 CALL 2 WORKING DAYS BEFORE YOU DIG  
**1-800-382-5544**  
 CALL TOLL FREE

PER INDIANA STATE LAW IC-6-1-26-1  
 ET SEQ. AS AMENDED AND SUPPLEMENTED,  
 IT IS AGAINST THE LAW TO EXCAVATE  
 WITHOUT NOTIFYING THE UNDERGROUND  
 LOCATION SERVICE TWO (2) WORKING  
 DAYS BEFORE COMMENCING WORK.



**HOLEY MOLEY SAYS**  
**"DON'T DIG BLIND"**

**"IT'S THE LAW"**  
 CALL 2 WORKING DAYS BEFORE YOU DIG  
**1-800-382-5544**  
 CALL TOLL FREE

PER INDIANA STATE LAW IC-6-1-26-1 ET SEQ. AS AMENDED AND SUPPLEMENTED, IT IS AGAINST THE LAW TO EXCAVATE WITHOUT NOTIFYING THE UNDERGROUND LOCATION SERVICE TWO (2) WORKING DAYS BEFORE COMMENCING WORK.

- (C1) PCCP FOR APPROACHES, 6" ON 4" #53 COMPACTED AGGREGATE
- (C2) PCCP FOR COMMERCIAL DRIVE, 8" ON 4" #53 COMPACTED AGGREGATE
- (CR) CURB RAMP
- (52) TRANSVERSE MARKING, THERMOPLASTIC CROSSWALK 24" BAR
- (A) TRANSITIONAL CONCRETE MILL (2" TO 1/2") COMPOSITE INTERLAYER PAVING GRID 2" HMA SURFACE TYPE C



CITY OF SHELBYVILLE, INDIANA  
 ENGINEERING DEPARTMENT  
 44 WEST WASHINGTON STREET  
 SHELBYVILLE, INDIANA 46176  
 PHONE (317) 398-5102  
 FAX (317) 392-5110  
 www.cityofshelbyville.in

**CITY OF SHELBYVILLE, INDIANA**

**MCKAY ROAD  
 MILL AND OVERLAY**

HORIZONTAL SCALE	-
VERTICAL SCALE	-
SHEET	5 of 8
PROJECT	-



19+ STR. NO. 12  
 NEW STORM INLET TYPE A  
 T.C. = 775.71  
 INVERT 12" (S) = 772.71

15+25.3 STR. NO. 10  
 NEW STORM INLET TYPE A  
 T.C. = 773.69  
 INVERT 12" (S) = 770.69

Top of Curb  
 ELEV. 774.36

Exist. Sanitary MH  
 T.C. 775.34

Exist. Sanitary MH  
 T.C. 773.96

Top of Curb  
 ELEV. 774.34

NEW 12" STORM PIPE  
 28' LFT REQUIRED

NEW 12" STORM PIPE  
 430 LFT REQUIRED

19+58.48 STR. NO. 11  
 NEW STORM INLET TYPE  
 T.C. = 775.73  
 INVERT 12" (W) = 771.  
 INVERT 12" (N) = 772.

15+25.3 STR. NO. 9  
 NEW STORM INLET TYPE A  
 T.C. = 773.61  
 INVERT 12" (W) = 770.00  
 INVERT 12" (N) = 770.60  
 INVERT 12" (E) = 770.3

**HOLEY MOLEY SAYS**  
**"DON'T DIG BLIND"**

**"IT'S THE LAW"**  
 CALL 2 WORKING DAYS BEFORE YOU DIG  
**1-800-382-5544**  
 CALL TOLL FREE

PER INDIANA STATE LAW IC-8-1-26-1 ET SEQ. AS AMENDED AND SUPPLEMENTED, IT IS AGAINST THE LAW TO EXCAVATE WITHOUT NOTIFYING THE UNDERGROUND LOCATION SERVICE TWO (2) WORKING DAYS BEFORE COMMENCING WORK.

- (C1) PCCP FOR APPROACHES, 6" ON 4" #53 COMPACTED AGGREGATE
- (C2) PCCP FOR COMMERCIAL DRIVE, 8" ON 4" #53 COMPACTED AGGREGATE
- (CR) CURB RAMP
- (52) TRANSVERSE MARKING, THERMOPLASTIC CROSSWALK 24" BAR
- (A) TRANSITIONAL CONCRETE MILL (2" TO 1/2") COMPOSITE INTERLAYER PAVING GRID 2" HMA SURFACE TYPE C

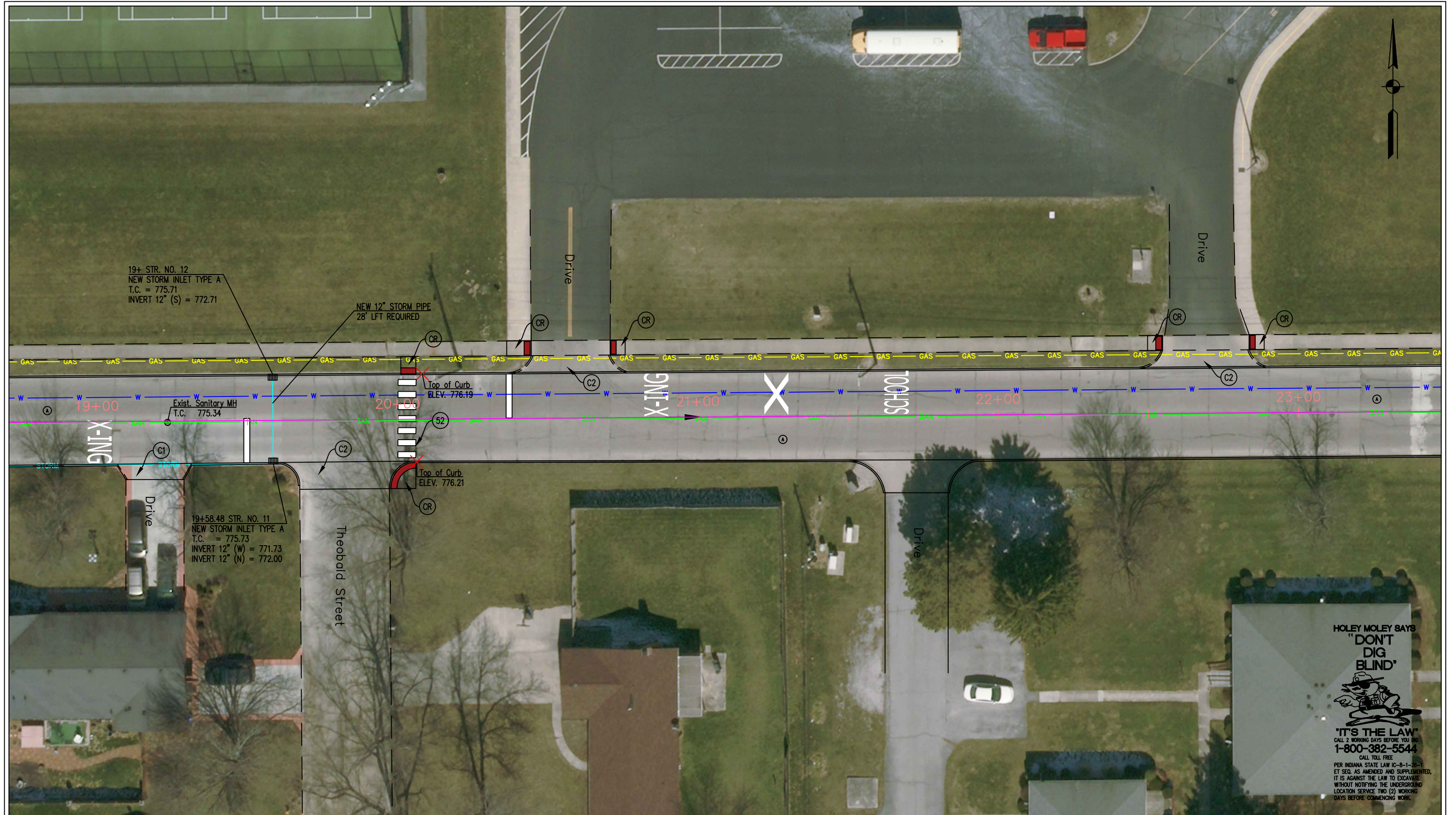


CITY OF SHELBYVILLE, INDIANA  
 ENGINEERING DEPARTMENT  
 44 WEST WASHINGTON STREET  
 SHELBYVILLE, INDIANA 46176  
 PHONE (317) 398-5102  
 FAX (317) 392-5110  
 www.cityofshelbyvillein.com

**CITY OF SHELBYVILLE, INDIANA**

**MCKAY ROAD  
 MILL AND OVERLAY**

HORIZONTAL SCALE	
-	
VERTICAL SCALE	
-	
SHEET	
6	of 8
PROJECT	
-	



19+ STR. NO. 12  
NEW STORM INLET TYPE A  
T.C. = 775.71  
INVERT 12" (S) = 772.71

NEW 12" STORM PIPE  
28' LFT REQUIRED

19+58.48 STR. NO. 11  
NEW STORM INLET TYPE A  
T.C. = 775.73  
INVERT 12" (W) = 771.73  
INVERT 12" (N) = 772.00

Exist. Sanitary MH  
T.C. = 775.34

Top of Curb  
ELEV. 776.19

Top of Curb  
ELEV. 776.21

- (C1) PCCP FOR APPROACHES, 6" ON 4" #53 COMPACTED AGGREGATE
- (C2) PCCP FOR COMMERCIAL DRIVE, 8" ON 4" #53 COMPACTED AGGREGATE
- (CR) CURB RAMP
- (52) TRANSVERSE MARKING, THERMOPLASTIC CROSSWALK 24" BAR
- (A) TRANSITIONAL CONCRETE MILL (2" TO 1/2") COMPOSITE INTERLAYER PAVING GRID 2" HMA SURFACE TYPE C



CITY OF SHELBYVILLE, INDIANA  
ENGINEERING DEPARTMENT  
44 WEST WASHINGTON STREET  
SHELBYVILLE, INDIANA 46176  
PHONE (317) 398-5102  
FAX (317) 392-5110  
www.cityofshelbyvillein.com

CITY OF SHELBYVILLE, INDIANA

MCKAY ROAD  
MILL AND OVERLAY

HOLEY MOLEY SAYS  
"DON'T DIG BLIND"

"IT'S THE LAW"  
CALL 2 WORKING DAYS BEFORE YOU DIG  
1-800-382-5544  
CALL TOLL FREE

PER INDIANA STATE LAW IC-8-1-25-1 ET SEQ. AS AMENDED AND SUPPLEMENTED, IT IS AGAINST THE LAW TO EXCAVATE WITHOUT NOTIFYING THE UNDERGROUND LOCATION SERVICE TWO (2) WORKING DAYS BEFORE COMMENCING WORK.

HORIZONTAL SCALE	
-	
VERTICAL SCALE	
-	
SHEET	
7	of 8
PROJECT	
-	



HOLEY MOLEY SAYS  
 "DON'T  
 DIG  
 BLIND"  
  
 "IT'S THE LAW"  
 CALL 2 WORKING DAYS BEFORE YOU DIG  
 1-800-382-5544  
 CALL TOLL FREE  
 PER INDIANA STATE LAW IC-8-1-26-1  
 ET SEQ. AS AMENDED AND SUPPLEMENTED,  
 IT IS AGAINST THE LAW TO EXCAVATE  
 WITHOUT NOTIFYING THE UNDERGROUND  
 LOCATION SERVICE TWO (2) WORKING  
 DAYS BEFORE COMMENCING WORK.

- (C1) PCCP FOR APPROACHES, 6" ON 4" #53 COMPACTED AGGREGATE
- (C2) PCCP FOR COMMERCIAL DRIVE, 8" ON 4" #53 COMPACTED AGGREGATE
- (CR) CURB RAMP
- (52) TRANSVERSE MARKING, THERMOPLASTIC CROSSWALK 24" BAR
- (A) TRANSITIONAL CONCRETE MILL (2" TO 1/2") COMPOSITE INTERLAYER PAVING GRID 2" HMA SURFACE TYPE C



CITY OF SHELBYVILLE, INDIANA  
 ENGINEERING DEPARTMENT  
 44 WEST WASHINGTON STREET  
 SHELBYVILLE, INDIANA 46176  
 PHONE (317) 398-5102  
 FAX (317) 392-5110  
 www.cityofshelbyvillein.com

**CITY OF  
 SHELBYVILLE, INDIANA**

**MCKAY ROAD  
 MILL AND OVERLAY**

HORIZONTAL SCALE	-
VERTICAL SCALE	-
SHEET	8 of 8
PROJECT	-