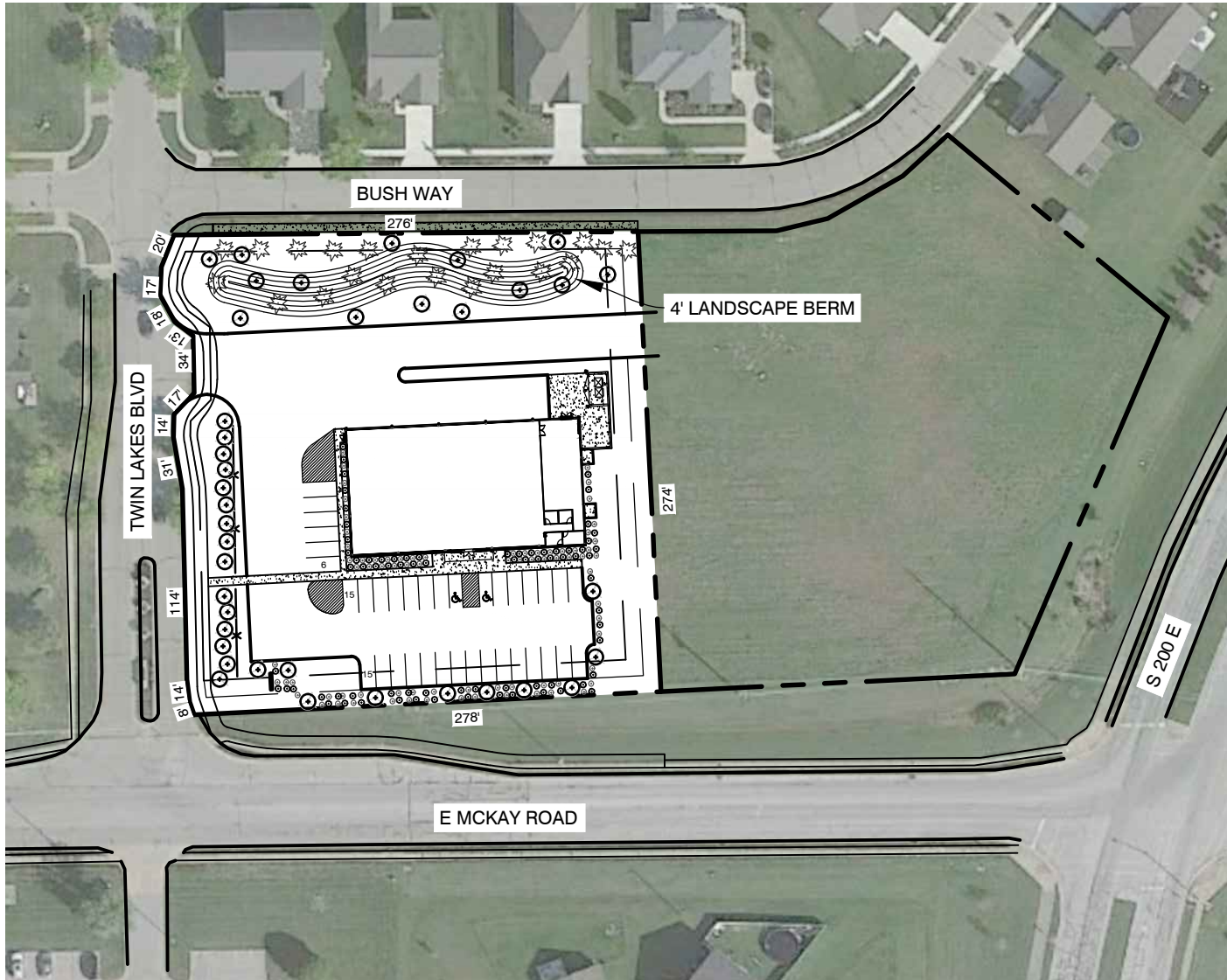


SHELBYVILLE, IN
2/09/2024



LANDSCAPE CALCULATIONS

BUILDING FACADE (>80')

- FRONT (140')
- REQUIRED: (2) SHRUBS OR ORNAMENTAL TREES PER 5'
- $140' / 5 * 2 = 56$ SHRUBS OR ORNAMENTAL TREES
- SIDES (77')
- REQUIRED: (2) SHRUBS OR ORNAMENTAL TREES PER 10'
- $77' / 10 * 2 = 15$ SHRUBS OR ORNAMENTAL TREES
- REAR (140')
- REQUIRED: SHRUBS OR ORNAMENTAL TREES PER 10'
- $140' / 10 * 2 = 28$ SHRUBS OR ORNAMENTAL TREES

YARD (>1 ACRE)

- (2) CANOPY TREES + (1) CANOPY TREE PER ACRE
- 2 ACRES
- $2 + 2 = 4$ CANOPY TREES
- PROVIDED: 4 CANOPY TREES

PARKING LOT LANDSCAPING

- REQUIRED: 10' LANDSCAPE BUFFER
- (1) TREE PER 400 SFT OF LANDSCAPE AREA
- $2,450 / 400 = 6$ TREES
- (1) SHRUB PER 50 SFT OF LANDSCAPE AREA
- $2,450 / 50 = 49$ SHRUBS

LANDSCAPE ISLANDS

- 5% OF PARKING AREA
- $17,916 \text{ SFT} * 0.05 = 895 \text{ SFT}$
- (1) TREE PER 200 SFT
- $895 / 200 = 4$ TREES
- (1) SHRUB PER 50 SFT
- $895 / 50 = 18$ SHRUBS

BUFFER YARD TYPE 3 (NORTH AND WEST PROPERTY LINES)

- (1) DECIDUOUS TREE PER 25'
- (4) ORNAMENTAL TREES PER 50'
- * FENCE REDUCES REQUIREMENT BY 50%
- NORTH: 276'
- $276' / 25 * 1 = 11$ DECIDUOUS TREES
- $276' / 50 * 4 = 22$ ORNAMENTAL TREES
- WEST: 274'
- $238' / 25 * 1 = 10 / 2 = 5$ DECIDUOUS TREES
- $238' / 50 * 4 = 19 / 2 = 10$ ORNAMENTAL TREES